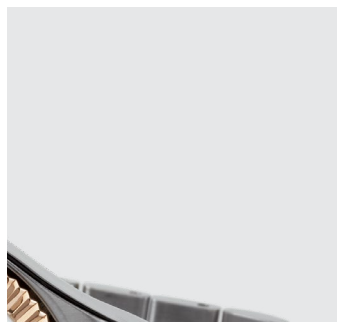
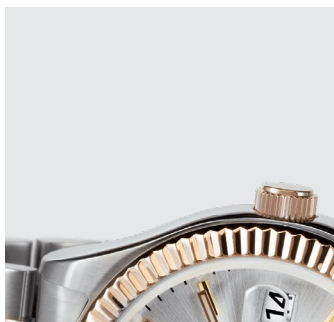
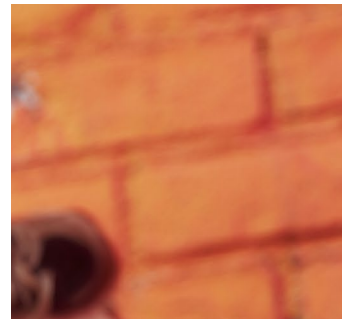
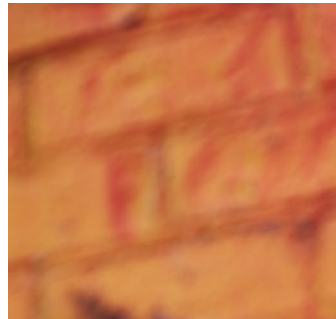




# TIMEX

SUMMER 2019





**WE DON'T STOP™**  
BECAUSE YOU DON'T

# TIMEX

SUMMER 2019

## MEN'S COLLECTION

### MEN'S CITY COLLECTION

Norway 40mm	6
-------------	---

### MEN'S ESSENTIAL COLLECTION

Standard Chronograph	8
Standard	10
Fairfield 41mm	12
Fairfield Chronograph	13
Fairfield Chronograph Supernova™	14

### MEN'S MILITARY COLLECTION

MK1™ Steel	18
MK1™ Steel Chronograph	20
MK1™ Steel Chronograph Supernova™	21

### MEN'S DRESS COLLECTION

Southview 41mm	22
Southview Multi-Function	23

### MEN'S HERITAGE COLLECTION

Waterbury Classic Chronograph	24
-------------------------------	----

## WOMEN'S COLLECTION

### WOMEN'S HERITAGE COLLECTION

Waterbury Women's	26
-------------------	----

### WOMEN'S CITY COLLECTION

Transcend Multifunction	30
-------------------------	----

### WOMEN'S ESSENTIAL COLLECTION

Fairfield 37mm	32
----------------	----

## MARKETING MATERIAL

Point of Sale	34
Merchandising Guidelines	37
Social Media Assets	38
Web Banners	39
EDM Templates	40
Collateral & In-Store Visuals	42
Warranty & Customer Service	44





TORTURED UNDERWATER  
AND SHOT INTO SPACE

TORTURED ON LIVE TELEVISION IN THE 1960s. NASA-CERTIFIED FOR SPACE IN 1996. THERE’S NOTHING QUITE LIKE A TIMEX.

TAKES A LICKING AND  
KEEPS ON TICKING

FOR GENERATIONS, WE’VE KEPT THE SAME WATCHMAKING MISSION.



2019 marks 165 years of quality timekeeping.

ABOUT US

We are watchmakers, obsessed with innovative craftsmanship and thoughtful design. Generations ago, we revolutionised timekeeping by taking it from the mantels of the one-percent and bringing it to the world. And we have not stopped challenging the status quo since.

We always ticked a little differently than other watch brands. In 1854, we took traditional European watchmaking and layered American industrial ingenuity on top to disrupt a 300 year-old industry. We turned clocks from expensive, fragile curiosities into reliable technology that any working family could afford. By 1901, our movements fit in your pocket and cost just one dollar, and by the 1960s, every third watch sold in America was a Timex.

We helped invent wristwatches, and we reinvent them today.

We are passionate craftsmen, carrying forward our heritage and tradition. We helped invent wristwatches and we are reinventing them today. We create our own designs, carefully source each material and build Timex watches with our own hands.

QUALITY TIMEKEEPING SINCE 1854

MK1™

OUR ORIGINAL MILITARY DESIGN

Built to improve on our original military-spec, our MK1™ watch finds its appeal in pure utilitarian design. We have a long history of military timepieces, back to some of the very first wrist watches made from pocket watches with welded bars and a slip-thru strap. Our modern MK1 collection, with updated materials and movements and original domed lens, is equally at home in the field or the city.

- Stainless Steel Case
- Water Resistant to 30M
- INDIGLO® Backlight



WATERBURY

THE WORLD’S MOST POPULAR WATCH.

Waterbury is our premier collection, inspired by our 1854 roots as the Waterbury Clock Company. The Waterbury collection honors more than 165 years of watchmaking and a time when how you made something was just as important as what you made. Crafted with premium polished, brushed and plated stainless steel cases, hand stitched leather straps and a refined attention to detail, our Waterbury collection combines contemporary watchmaking with generations of experienced workmanship.

- Natural Leather Strap
- Water Resistant to 30M
- INDIGLO® Backlight



TIMEX STANDARD

THE WATCHMAKER’S CASUAL WATCH

With its careful attention to detail, our Timex Standard shines as one of our most refined everyday watches. Designed with a traditional oversized crown, a nod to our original pocket watch, our Timex Standard brings together classic elements with modern materials and easily interchangeable straps.

- Natural Leather Strap
- 24 Hour Military Time
- Water Resistant to 30M
- INDIGLO® Backlight





MEN'S CITY  
COLLECTION



TIMEX BOUTIQUE

NORWAY 40MM

FEATURES

Genuine Leather Strap  
Water Resistant to 30M  
Slim 6.5mm Case Height



NEW



TW2T66200 - \$139.95

Polished Black Case  
Blue Dial  
Blue Matte Leather Strap  
40mm Case, 20mm Lug



NEW



TW2T66300 - \$139.95

Polished Silver-tone Case  
White Dial  
Black Matte Leather Strap  
40mm Case, 20mm Lug



NEW



TW2T66400 - \$139.95

Polished Black Case  
Black Dial  
Brown Matte Leather Strap  
40mm Case, 20mm Lug





TIMEX



MEN'S ESSENTIAL  
COLLECTION



TIMEX BOUTIQUE

STANDARD CHRONOGRAPH

FEATURES

Genuine Leather Strap  
with Quick-Release Spring-Bars  
Chronograph with 4 Hour Capacity  
QuickDate®  
Water Resistant to 30M  
INDIGLO® Backlight

NEW



TW2T68900 - \$229.95

Polished Silver-tone Case  
Blue Dial  
Brown Matte Leather Strap  
41mm Case, 20mm Lug



TW2T20900 - \$229.95

Polished Gold-tone Case  
Black Dial  
Brown Smooth Leather Strap  
41mm Case, 20mm Lug



TW2T21000 - \$229.95

Polished Silver-tone Case  
Cream Dial  
Brown Smooth Leather Strap  
41mm Case, 20mm Lug



TW2T21100 - \$229.95

Polished Silver-tone Case  
Black Dial  
Black Smooth Leather Strap  
41mm Case, 20mm Lug



STANDARD

FEATURES

Genuine Leather Strap  
with Quick-Release Spring-Bars  
Water Resistant to 30M  
INDIGLO® Backlight

NEW



**TW2T69300 - \$149.95**

Polished Black Case  
Black Dial  
Tan Matte Leather Strap  
40mm Case, 20mm Lug



**TW2T20000 - \$149.95**

Polished Gold-tone Case  
Blue Dial  
Tan Smooth Leather Strap  
40mm Case, 20mm Lug



NEW



**TW269200 - \$149.95**

Polished Silver-tone Case  
Silver-tone Dial  
Black Matte Leather Strap  
40mm Case, 20mm Lug



NEW



**TW2T69400 - \$149.95**

Polished Gunmetal Case  
Blue Dial  
Brown Matte Leather Strap  
40mm Case, 20mm Lug



**TW2T20200 - \$149.95**

Polished Silver-tone Case  
Black Dial  
Black Smooth Leather Strap  
40mm Case, 20mm Lug



**TW2T20700 - \$149.95**

Polished Silver-tone Case  
Cream Dial  
Brown Smooth Leather Strap  
40mm Case, 20mm Lug





FAIRFIELD 41MM

FEATURES

Genuine Leather Strap  
with Quick-Release Spring-Bars  
Water Resistant to 30M  
INDIGLO® Backlight



**TW2R26000 - \$149.95**

Polished Gold-tone Case  
Black Dial  
Black Smooth Leather Strap  
41mm Case, 20mm Lug



**TW2R26200 - \$149.95**

Polished Rose Gold-tone Case  
Natural Dial  
Tan Smooth Leather Strap  
41mm Case, 20mm Lug



**TW2R26300 - \$149.95**

Polished Silver-tone Case  
White Dial  
Black Smooth Leather Strap  
41mm Case, 20mm Lug



FAIRFIELD CHRONOGRAPH

FEATURES

Genuine Leather Strap  
with Quick-Release Spring-Bars  
Chronograph with 4 Hour Capacity  
QuickDate®  
Water Resistant to 30M  
INDIGLO® Backlight



**TW2T11500 - \$229.95**

Polished Silver-tone Case  
Rose Gold-tone Accents  
Black Dial  
Dark Brown Smooth Leather Strap  
41mm Case, 20mm Lug



**TW2T11600 - \$229.95**

Polished Rose Gold-tone Case  
Black Dial  
Black Smooth Leather Strap  
41mm Case, 20mm Lug



**TW2R26700 - \$199.95**

Polished Silver-tone Case  
White Dial  
Tan Smooth Leather Strap  
41mm Case, 20mm Lug



**TW2R26800 - \$199.95**

Polished Black Case  
Black Dial  
Black Smooth Leather Strap  
41mm Case, 20mm Lug



FAIRFIELD CHRONOGRAPH SUPERNOVA™

FEATURES

Innovative Dial Treatment  
Genuine Leather Strap  
or Stainless Steel Mesh Band (TW2R97900, TW2R98000)  
with Quick-Release Spring-Bars  
Chronograph with 4 Hour Capacity  
QuickDate®  
Water Resistant to 30M  
INDIGLO® Backlight



**TW2R79900 - \$199.95**

Matte Silver-tone Case  
Silver-tone Dial  
Smooth Tan Leather Strap  
41mm Case, 20mm Lug



**TW2R80100 - \$199.95**

Matte Bronze-tone Case  
Bronze-tone Dial  
Smooth Brown Leather Strap  
41mm Case, 20mm Lug



**TW2R79800 - \$199.95**

Matte Black Case  
Black Dial  
Smooth Black Leather Strap  
41mm Case 20mm Lug



**TW2R97700 - \$249.95**

Matte Silver-tone Case  
Silver-tone Dial  
Smooth Blue Leather Strap  
41mm Case, 20mm Lug



**TW2R97800 - \$249.95**

Matte Gunmetal Grey Case  
Grey Dial  
Smooth Grey Leather Strap  
41mm Case, 20mm Lug







**SUPERNOVA INDIGLO® DIAL DESIGN**

The TIMEX Supernova™ is a new way to experience our INDIGLO® Backlight technology. A thin layer of metal is placed on top of the dial and, using precision laser cutting techniques, the top layer is perforated to allow for the light to pass through, creating a new and unique way to illuminate the dial.



**TW2R98000 - \$249.95**

Matte Gunmetal Grey Case  
Grey Dial  
Grey Stainless Steel Mesh Band  
41mm Case, 20mm Lug



**TW2R97900 - \$249.95**

Matte Silver-tone Case  
Silver-tone Dial  
Silver-tone Stainless Steel Mesh Band  
41mm Case, 20mm Lug





TIMEX



TIMEX BOUTIQUE

MK1™ STEEL

FEATURES

- Stainless Steel Case
- Domed Acrylic Crystal
- Geniune S.B Foot Tanning Co.® Leather Strap with Quick-Release Spring Bars
- Water Resistant to 30M
- INDIGLO® Backlight



NEW



TW2T68200 - \$179.95

Matte Gunmetal Stainless Steel Case  
Blue Dial  
Matte Brown Leather Strap  
40mm Case, 20mm Lug



MEN'S MILITARY  
COLLECTION



TW2R96800 - \$199.95

Matte Stainless Steel Case  
Natural Dial  
Matte Brown Leather Strap  
40mm Case, 20mm Lug



TW2R96900 - \$199.95

Matte Black Stainless Steel Case  
Black Dial  
Matte Brown Leather Strap  
40mm Case, 20mm Lug





MK1™ STEEL CHRONOGRAPH

FEATURES

- Stainless Steel Case
- Domed Acrylic Crystal
- Geniune S.B Foot Tanning Co.® Leather Strap with Quick-Release Spring Bars
- Chronograph with 4 Hour Capacity
- QuickDate®
- Water Resistant to 30M
- INDIGLO® Backlight



TW2R96400 - \$249.95

- Matte Stainless Steel Case
- Natural Dial
- Matte Brown Leather Strap
- 42mm Case, 20mm Lug



TW2R96500 - \$249.95

- Matte Black Stainless Steel Case
- Black Dial
- Matte Brown Leather Strap
- 42mm Case, 20mm Lug



MK1™ STEEL CHRONOGRAPH SUPERNOVA™

FEATURES

- Stainless Steel Case
- Domed Acrylic Crystal
- Genuine Leather Strap or Single Layer Fabric Slip-Thru Strap (TW2T29700) with Quick-Release Spring-Bars
- Chronograph with 4 Hour Capacity
- QuickDate®
- Water Resistant to 30M
- INDIGLO® Backlight



TW2T29700 - \$279.95

- Brushed Black Stainless Steel Case
- Black Dial
- Black Fabric Strap
- 42mm Case, 20mm Lug



TW2T29500 - \$279.95

- Brushed Black Stainless Steel Case
- Black Dial
- Black Smooth Leather Strap
- 42mm Case, 20mm Lug



TW2T29600 - \$279.95

- Matte Grey Stainless Steel Case
- Black Dial
- Brown Smooth Leather Strap
- 42mm Case, 20mm Lug





TIMEX



MEN'S DRESS  
COLLECTION



TIMEX BOUTIQUE

SOUTHVIEW 41MM

FEATURES

Genuine Leather Strap  
Water Resistant to 30M



**TW2T34900 - \$129.95**

Polished Black Case  
Black Dial  
Black Textured Leather Strap  
41mm Case, 20mm Lug



**TW2R80300 - \$129.95**

Polished Black Case  
Black Dial  
Brown Smooth Leather Strap  
41mm Case, 20mm Lug



**TW2R63900 - \$129.95**

Polished Silver-tone Case  
Blue Dial  
Tan Smooth Leather Strap  
41mm Case, 20mm Lug



SOUTHVIEW MULTIFUNCTION

FEATURES

Multi-Function  
Genuine Leather Strap  
Water Resistant to 30M



**TW2T35200 - \$149.95**

Polished Black Case  
Black Dial  
Black Textured Leather Strap  
41mm Case, 20mm Lug



**TW2R29200 - \$149.95**

Polished Silver-tone Case  
White Dial  
Blue Smooth Leather Strap  
41mm Case, 20mm Lug





TIMEX



TIMEX BOUTIQUE

## WATERBURY CLASSIC CHRONOGRAPH

### FEATURES

Stainless Steel Case  
Genuine Leather Strap  
with Quick-Release Spring-Bars  
Chronograph with 4 Hour Capacity  
QuickDate®  
Water Resistant to 30M  
INDIGLO® Backlight



**TW2T28000 - \$279.95**

Brushed/Polished  
Stainless Steel Case  
White Dial  
Tan Matte Leather Strap  
40mm Case, 20mm Lug



## MEN'S HERITAGE COLLECTION



**TW2T28200 - \$279.95**

Brushed/Polished  
Stainless Steel Case  
Black Dial  
Brown Matte Leather Strap  
40mm Case, 20mm Lug





TIMEX



WOMEN'S HERITAGE  
COLLECTION



TIMEX BOUTIQUE

WATERBURY WOMEN'S

FEATURES

Stainless Steel Case  
Stainless Steel Bracelet  
Water Resistant to 50M  
QuickDate®

NEW



TW2T87100 - \$249.95

Brushed/Polished Gold-tone  
Stainless Steel Case  
Chocolate Caramel Tiger's Eye Dial  
Brushed/Polished Gold-tone Bracelet  
34mm Case, 16mm Lug



NEW



TW2T87300 - \$249.95

Brushed/Polished Rose Gold-tone  
Stainless Steel Case  
Blue Tiger's Eye Dial  
Brushed/Polished Rose Gold-tone  
Bracelet  
34mm Case, 16mm Lug



NEW



TW2T87200 - \$229.95

Brushed/Polished Silver-tone  
Stainless Steel Case  
Green Tiger's Eye Dial  
Brushed/Polished Silver-tone Bracelet  
34mm Case, 16mm Lug





WATERBURY WOMEN’S

FEATURES

- Stainless Steel Case
- Stainless Steel Bracelet
- Water Resistant to 50M
- QuickDate®



NEW



**TW2T86900 - \$249.95**

- Brushed/Polished Gold-tone Stainless Steel Case
- Gold-tone Dial
- Brushed/Polished Gold-tone Bracelet
- 34mm Case, 16mm Lug



NEW



**TW2T86800 - \$249.95**

- Brushed/Polished Rose Gold-tone Stainless Steel Case
- Rose Gold-tone Dial
- Brushed/Polished Rose Gold-tone Bracelet
- 34mm Case, 16mm Lug



NEW



**TW2T87000- \$249.95**

- Brushed/Polished Rose Gold Two-tone Stainless Steel Case
- Silver-tone Dial
- Brushed/Polished Rose Gold Two-tone Bracelet
- 34mm Case, 16mm Lug



WATERBURY WOMEN’S

FEATURES

- Stainless Steel Case
- Stainless Steel Mesh Band
- Water Resistant to 50M
- INDIGLO® Backlight



**TW2T36200 - \$249.95**

- Brushed/Polished Rose Gold-tone Stainless Steel Case
- Cream Dial
- Rose Gold-tone Stainless Steel Mesh Band
- 34mm Case, 16mm Lug



**TW2T36300 - \$249.95**

- Brushed/Polished Stainless Steel Case
- Navy Dial
- Stainless Steel Mesh Band
- 34mm Case, 16mm Lug



**TW2T36400 - \$249.95**

- Brushed/Polished Gold-tone Stainless Steel Case
- Black Dial
- Gold-tone Stainless Steel Mesh Band
- 34mm Case, 16mm Lug



TIMEX



WOMEN'S CITY  
COLLECTION



TIMEX BOUTIQUE

TRANSCEND MULTIFUNCTION

FEATURES

Stainless Steel Mesh Band or Genuine Leather Strap (TW2T74300)  
with Quick-Release Spring Bars  
Multifunction  
Water Resistant to 50M

NEW



**TW2T74300 - \$179.95**

Polished Rose Gold-tone  
Case  
White Dial  
Pink Matte Leather Strap  
38mm Case, 18mm Lug



NEW



**TW2T74700 - \$179.95**

Polished Gunmetal Case  
Gunmetal Dial with  
Rose Gold-tone Accents  
Polished Gunmetal Stainless  
Steel Mesh Bracelet  
38mm Case, 18mm Lug



NEW



**TW2T74500 - \$179.95**

Polished Rose Gold-tone Case  
Light Pink Dial  
Polished Rose Gold-tone  
Stainless Steel Mesh Bracelet  
38mm Case, 18mm Lug





TIMEX



TIMEX BOUTIQUE

## FAIRFIELD 37MM

### FEATURES

Stainless Steel Mesh Band  
with Quick-Release Spring-Bars  
Water Resistant to 30M  
INDIGLO® Backlight



**TW2R26400 - \$179.95**

Polished Rose Gold-tone Case  
Natural Dial  
Polished Rose Gold-tone  
Stainless Steel Mesh Strap  
37mm Case, 18mm Lug



## WOMEN'S ESSENTIAL COLLECTION



POINT OF SALE

TWE077700  
SMALL WINDOW DISPLAY A

199mmW x 370mmD x 300mmH

- 1 Main base tiered
- 11 Bobines
- 1 Backwall
- 1 Two sided printed graphic



TWE077800  
SMALL WINDOW DISPLAY B

199mmW x 370mmD x 300mmH

- 1 Main base tiered
- 9 Bobines
- 1 Backwall
- 1 Two sided printed graphic
- 1 Small watch block
- 1 Medium watch block
- 1 Large watch block
- 3 Vertical rubber dipped cuffs
- 1 Horizontal rubber dipped cuffs



TWE077900  
SMALL WINDOW DISPLAY C

199mmW x 370mmD x 300mmH

- 1 Main base tiered
- 9 Bobines
- 1 Backwall
- 1 Two sided printed graphic
- 1 Watch bar



A5ACRYLIC  
A5 ACRYLIC SIGN HOLDER

148mmW x 70mmD x 210mmH

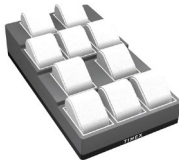


POINT OF SALE

TWE078100  
SMALL IN-CASE DISPLAY A

199mmW x 350mmD x 80mmH

- 1 Main base tiered
- 11 Bobines



TWE078200  
SMALL IN-CASE DISPLAY B

199mmW x 350mmD x 80mmH

- 1 Main base tiered
- 9 Bobines
- 1 Small watch block
- 1 Medium watch block
- 1 Large watch block
- 3 Vertical rubber dipped cuffs
- 1 Horizontal rubber dipped cuffs



TWE078300  
SMALL IN-CASE DISPLAY C

199mmW x 350mmD x 80mmH

- 1 Main base tiered
- 9 Bobines
- 1 Watch bar



TWE077600  
MEDIUM WINDOW DISPLAY

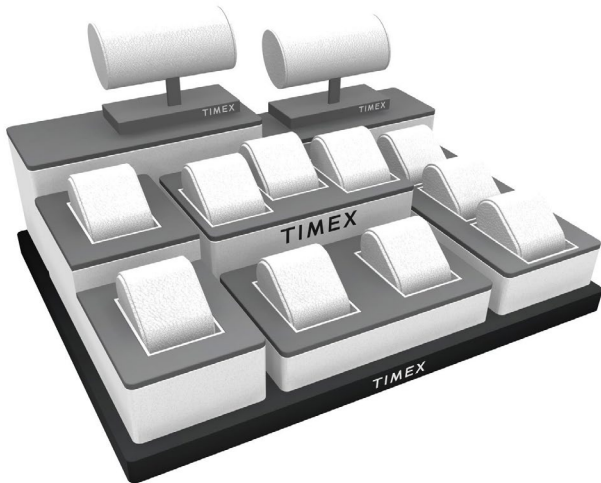
450mmW x 370mmD x 350mmH

- 1 Main base with screen printed logo
- 1 Backwall with 3D logo on the front, screen printed logo on the back
- 2 Watch bars
- 1 Vertical block with 3 bobines
- 1 Vertical tiered block with 2 bobines
- 1 Horizontal short block with 2 bobines
- 1 Horizontal tall block with 3 bobines
- 1 Large riser block
- 1 Short riser block

TWE078000  
MEDIUM IN-CASE DISPLAY

199mmW x 350mmD x 150mmH

- 1 Main base with screen printed logo
- 2 Watch bars
- 1 Vertical block with 3 bobines
- 1 Vertical tiered block with 2 bobines
- 1 Horizontal short block with 2 bobines
- 1 Horizontal tall block with 3 bobines
- 1 Large riser block
- 1 Short riser block





POINT OF SALE



TWX298900 — Vertical Cuff Pre-Pack  
Set includes 10 pieces



TWX298700 — Watch Bar  
1 piece



TWX298800 — Watch Block Pre-Pack  
Set includes: 1 small watch block, 1 medium watch block, 1 large watch block, 3 vertical rubber dipped cuffs, 1 Horizontal rubber dipped cuff



TWX299000 — Horizontal Cuff Pre-Pack  
Set includes 10 pieces



TWX298600 — Bobine  
Set includes 5 pieces



TWX299500 — Well Filler Pre-Pack  
Set includes 10 pieces



TWX299100 — Small Graphic Holder  
1 piece



TWX300000 — Island Base Plate  
1 piece

MERCHANDISING GUIDELINES

There are basic visual merchandising guidelines that will help you create a visually impactful display:

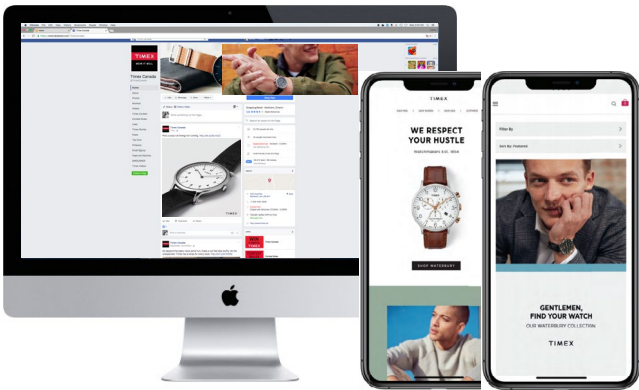
Step by Step

- › First group your TIMEX watches by category (Waterbury, Fairfield, MK1 etc)
- › Keep similar styles together with their product stories.
- › Relevant support visuals and display cards must be used to complement the display.





SOCIAL MEDIA ASSETS

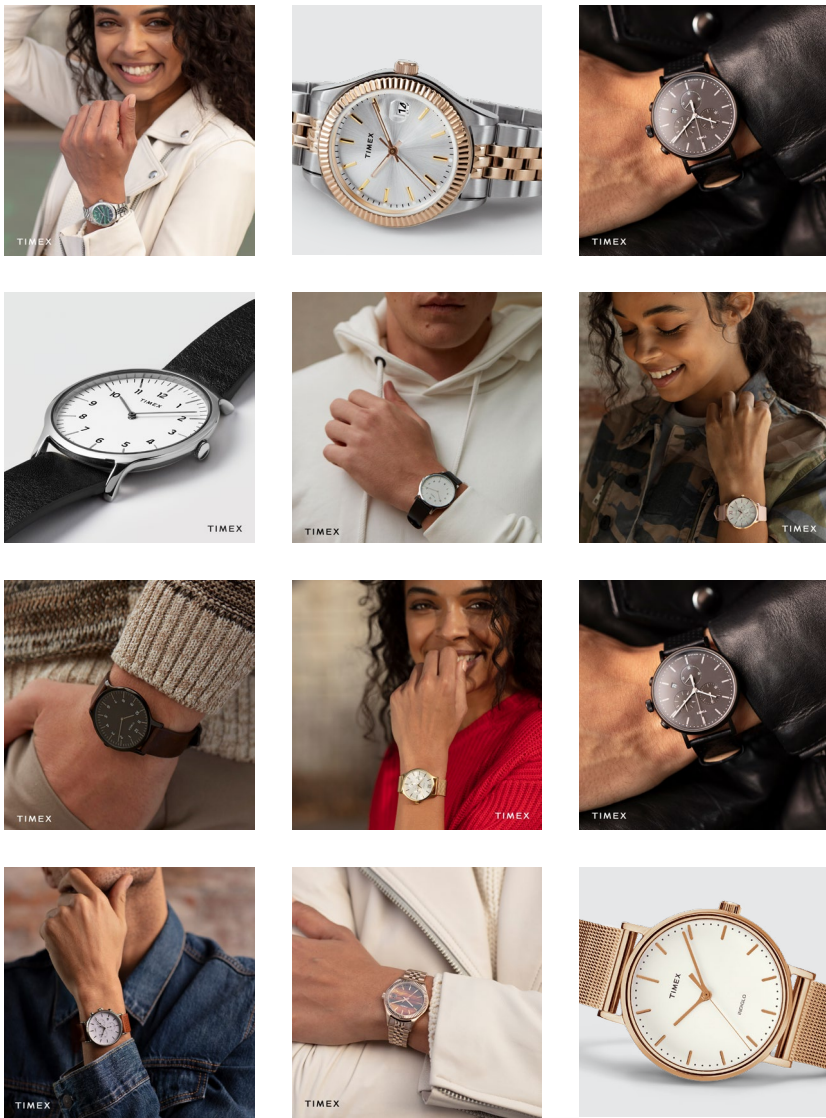


Our in-house Design & Marketing team are available to produce tailor made material to suit your needs.

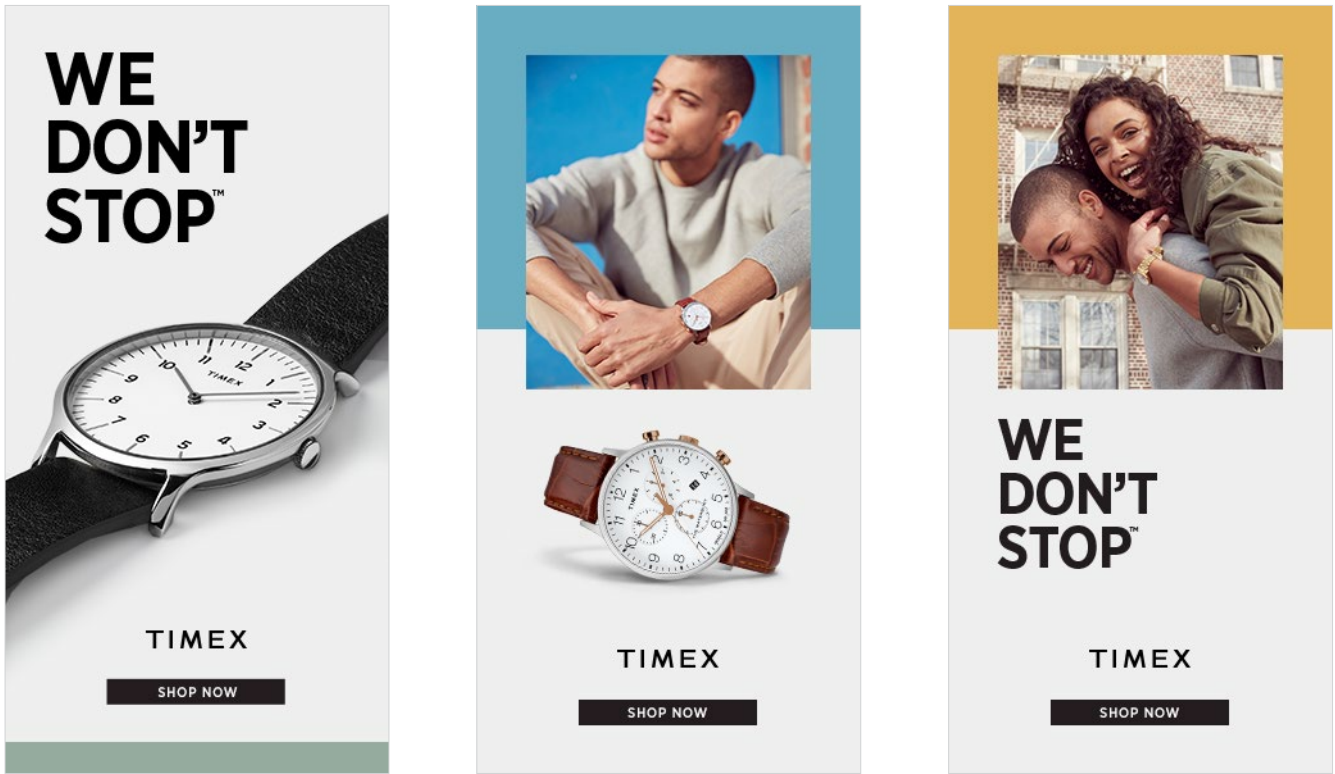
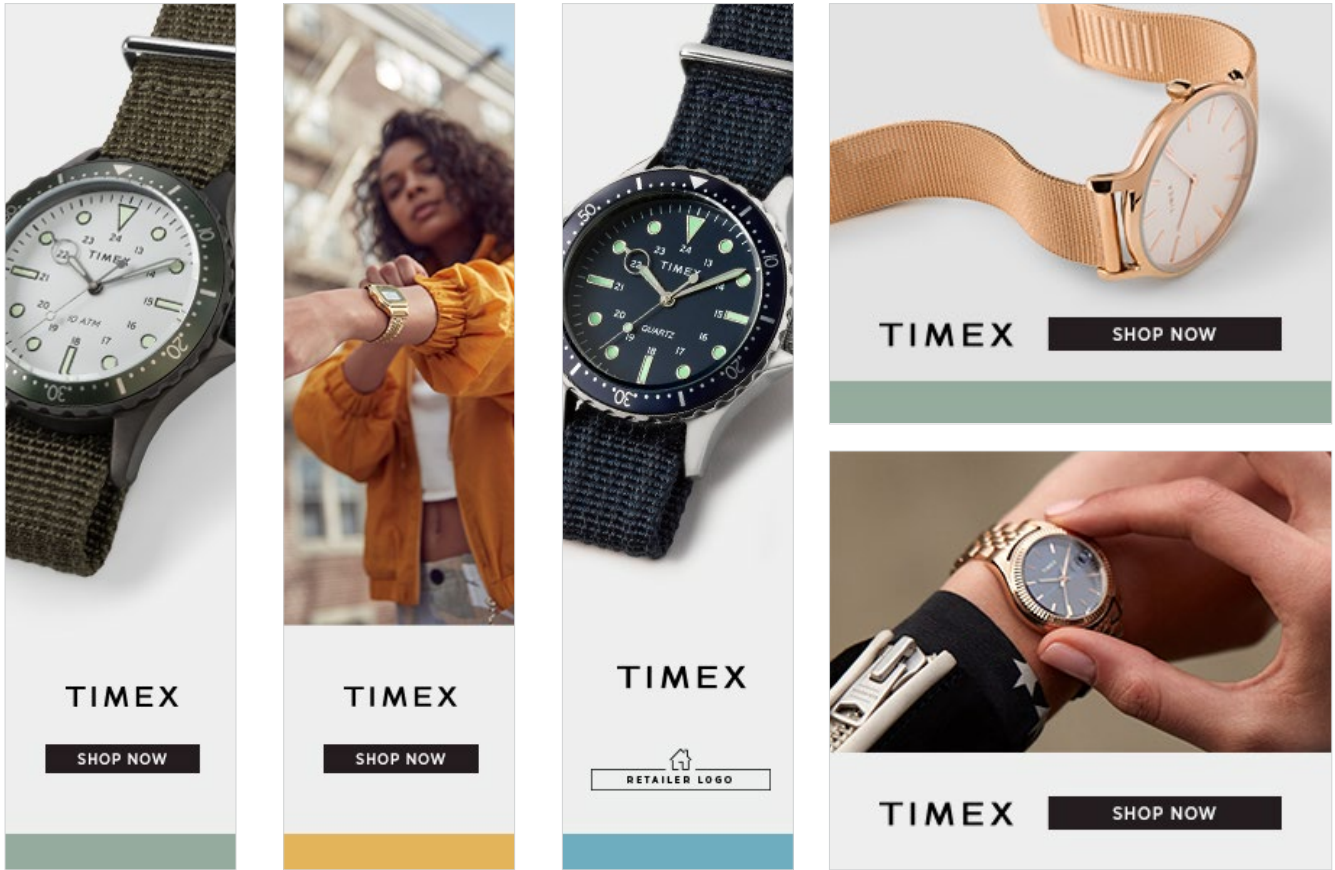
Whether it be Facebook posts or eDMs to call out new products, trends or promotions to your fans, we are happy to assist.

Contact our Brand team on  
(02) 8543 4600 or email  
marketing@designa.com.au

#TAKETIME



WEB BANNERS






EDM TEMPLATES

TIMEX

SHOP MEN | SHOP WOMEN | SHOP KIDS | CUSTOMIZE



YOU KNOW CRAFTSMANSHIP TAKES TIME




SHOP WATERBURY



WE DON'T STOP™  
BECAUSE YOU DON'T

LET'S BE SOCIAL




CONTACT US  
Monday - Friday 9 am - 5:30 PM

Brand


TIMEX


SHOP MEN | SHOP WOMEN | SHOP KIDS | CUSTOMIZE

UP YOUR STANDARDS




SHOP STANDARD XL





WE DON'T STOP™  
BECAUSE YOU DON'T

LET'S BE SOCIAL



CONTACT US  
Monday - Friday 9 am - 5:30 PM


Beauty

TIMEX


SHOP MEN | SHOP WOMEN | SHOP KIDS | CUSTOMIZE


WE RESPECT YOUR HUSTLE

Watchmakers Est. 1854




SHOP WATERBURY





WE DON'T STOP™  
BECAUSE YOU DON'T

LET'S BE SOCIAL



CONTACT US  
Monday - Friday 9 am - 5:30 PM  
EST 1854 | 1-877-243-7829  
usa@timex.com


This email was sent to us from timex@gmail.com by Timex Group USA, Inc.  
100 Christian Road | Middletown, CT 06457-2000

Soldier

TIMEX


SHOP MEN | SHOP WOMEN | SHOP KIDS | CUSTOMIZE


SALE



There is nothing quite like a Timex.  
Watchmakers Est. 1854


SHOP SALE





WE DON'T STOP™  
BECAUSE YOU DON'T

LET'S BE SOCIAL



CONTACT US  
Monday - Friday 9 am - 5:30 PM  
EST 1854 | 1-877-243-7829  
usa@timex.com

Promotional

40

41



## COLLATERAL



### Backboard & Photoholder Imagery



Tri-card

## IN-STORE VISUALS



## NOTES

[illegible]

# TIMEX

## CUSTOMER SERVICE & WARRANTY INFORMATION

Designa Accessories has its own in-house Customer Service Centre to help you & your customers with all enquiries relating to the servicing and repair of all Designa Accessories products. Our Service Centre is manned by professional service consultants in conjunction with our team of qualified watch repairers and technicians. Call the Service Centre on (02) 8543 4600 or email [customer.service@designa.com.au](mailto:customer.service@designa.com.au)

### 2 YEAR LIMITED WARRANTY

Your Timex Watch is guaranteed for a period of two (2) years from the date of purchase against all defects in material or workmanship.

This does not apply to normal wear and tear or abuse of components and watch finish or plating and does not cover water damage caused by non-compliance with the enclosed water resistancy usage guide.

Under the Australian Consumer Law, we advise our goods come with guarantees that cannot be excluded under the Australian Consumer Law. You are entitled to a replacement or refund for a major failure and for compensation for any other reasonably foreseeable loss or damage.

You are also entitled to have the goods repaired or replaced if the goods fail to be of acceptable quality and the failure does not amount to a major failure (the "Mandatory Provision").

In the event of a defect or malfunction within this period, providing the watch care and precautions are followed, your Timex watch will be repaired or replaced with the same or similar model at our discretion. Your replacement watch will be warranted for the remainder of the period applicable to the original date of purchase. The following parts are covered by the Timex 2 year limited warranty:

1. Movement 2 YEARS
2. Battery 1 YEAR

The following parts are not covered by the Timex 2 year limited warranty:

1. Band/strap, case, clasp, hands, dial, crown and stones (including damage, scratching, breakage).
2. Lens breakage, scratching or damage.
3. Water leakage if the crown is not activated or the water care guidelines have not been followed.

4. General wear and tear, finish or plating of the watch or an defects arising from misuse or any other use which is not in accordance with the Recommended Watch Care Precautions.

For the warranty to be valid, it must be dated at the time of purchase and stamped by the retailer. Any other warranty given by the retailer is entirely their responsibility and terms of the warranty cannot be changed by any person.

Head to [www.designaaccessories.com.au](http://www.designaaccessories.com.au) for further information, or to download our service & repair form. In the event of a malfunction, return the watch, the warranty and proof of purchase carefully packed (do not send in original packaging as it will not be returned) and registered to:

Designa Accessories  
PO Box 2576  
Taren Point  
NSW 2229  
Australia

## INDEX

CODE	PAGE	CODE	PAGE	CODE	PAGE	CODE	PAGE
TW2T66200	7	TW2R26200	12	TW2R96900	19	TW2T87100	27
TW2T66300	7	TW2R26300	12	TW2T68200	19	TW2T87300	27
TW2T66400	7	TW2T11500	13	TW2R96400	20	TW2T87200	27
TW2T68900	9	TW2T11600	13	TW2R96500	20	TW2T86900	28
TW2T20900	9	TW2R26700	13	TW2T29700	21	TW2T86800	28
TW2T21000	9	TW2R26800	13	TW2T29500	21	TW2T87000	28
TW2T21100	9	TW2R97700	14	TW2T29600	21	TW2T36300	29
TW2T69300	10	TW2R97800	15	TW2T34900	23	TW2T36400	29
TW269200	10	TW2R79800	15	TW2R63900	23	TW2T36200	29
TW2T69400	10	TW2R79900	14	TW2R80300	23	TW2T74300	31
TW2T20000	11	TW2R97900	16	TW2T35200	23	TW2T74700	31
TW2T20200	11	TW2R80100	15	TW2R29200	23	TW2T74500	31
TW2T20700	11	TW2R98000	16	TW2T28000	25	TW2R26400	33
TW2R26000	12	TW2R96800	19	TW2T28200	25		

DESIGNA ACCESSORIES PTY LTD PO BOX 2576, Taren Point NSW 2229

Tel: (02) 8543 4600 • Fax (02) 8543 4690