



R O S E F I E L D

S24 WATCHES
IJF PICTORIAL

ROSEFIELD

About Us

Rosefield reimagines watches and jewellery for relaxed elegance and easy living. We make fashion-forward styles that blend the classic with the modern. Where function meets form. At a price that works for today's cosmopolitan consumer.

Who is she? The Rosefield Woman is the epitome of city living with her finger on the pulse of what's next, what's new, what's now. She's the quintessential cool girl that isn't afraid to try new things. The Rosefield Woman sets trends - never follows them - and knows what she wants in life. This is at the core of our design philosophy.

Rosefield draws inspiration from Dutch minimalist design while taking cues from global contemporary fashion aesthetics. Our collections incorporate elements of vintage beauty from classic pieces mixed with the creativity of the future. It's about being timeless, not trendy.

Simple Details. Pure Luxury.



2024 INTERNATIONAL JEWELLERY FAIR DEAL



Thank you for joining us at the 2024 International Jewellery Fair. We are excited to showcase our brands and have put together a special FAIR DEAL for you.

\$250 OFF

Take \$250 off your 35 SKU assortment. Normal price \$3,013 excl GST.

Fair deal offer
\$2,763 excl GST.

*Fair deal runs from 17th August to 6th September 2024 and is not valid in conjunction with any other offer.

ROSEFIELD



OWBLG-O84



OWBLG-O85



OWGLG-O86



HCBLG-H07



HWGSG-H01



HWD SG-H03



HWSSS-H02



OBGSG-O83



SEGSG-SE01



OVGSG-OV15



SEWDSG-SE03



OVWDSG-OV17



OWGSG-OV01



OWGMG-OV10



QWSG-Q03



QWSG-Q09



GWGSG-G02



GWSSS-G03



BEGSG-Q050



OEGSG-O79



OBGSG-O61



OWGSG-O60



OWDSG-O62



OWGSS-O63



OWGMG-O73



OWSMS-O74



OBSSG-O47



OCWSG-O40



OWSSSG-O48



SMGMG-S06



26WR-265



26WS-266



WSPR-W73



WEGR-W75



WFGG-W85

ROSEFIELD

ADDITIONAL ASSETS AVAILABLE

We are able to prepare a range of digital and physical assets. These include Website assets, Social assets and in-store Tricards.

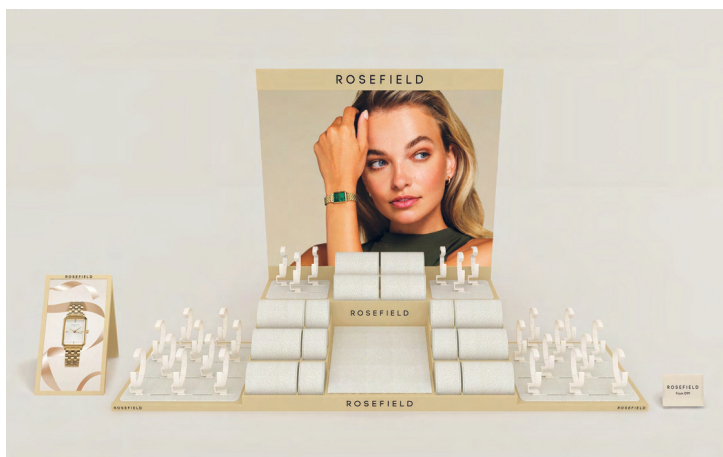
SOCIALS



BANNERS



DISPLAY



TRICARD



ROSEFIELD



HCBLG-H07
Heirloom Champagne
Gold Black Leather
AUD 169.95



OWBLG-O84
Octagon XS White Gold
Black Leather
AUD 169.95



OWBLG-O85
Octagon XS White Gold
Light Brown Leather
AUD 169.95



OWGLG-O86
Octagon XS White Gold
Emerald Croco Leather
AUD 169.95

ROSEFIELD



OBGSG-O83
Octagon XS Burgundy
Sunray Gold
AUD 199.95



OVGSG-OV15
Oval Burgundy Sunray
Gold Matte & Shine Finish
AUD 189.95



SEGS-SE01
Small Edit Burgundy
Sunray Gold
AUD 189.95

ROSEFIELD



SEWDSG-SE03
Small Edit White MOP
Duotone Shine Finish
AUD 189.95



OVWDSG-OV17
Oval White MOP Duotone
Shine Finish
AUD 189.95

ROSEFIELD



Dial Size
23.5x
30.6mm

HMGS-G-H04

\$199.95

Heirloom Mint Green Dial Steel
Gold



Dial Size
23.5x
30.6mm

HWDS-G-H03

\$199.95

Heirloom White Dial Duotone



Dial Size
23.5x
30.6mm

HWSS-S-H02

\$199.95

Heirloom White Dial Steel
Silver



Dial Size
23.5x
30.6mm

HWGS-G-H01

\$199.95

Heirloom White Dial Steel Gold

ROSEFIELD



Dial Size
26mm

SEEGMG-SE72

\$169.95

Small Edit Emerald Mesh Gold



Dial Size
26 x 28mm

BEGSG-Q050

\$189.95

Boxy XS Emerald Steel Gold



Dial Size
19.5x24mm

OEGSG-O79

\$199.95

Octagon XS Emerald Steel Gold



Dial Size
26x28mm

QWSG-Q09

\$189.95

THE BOXY WHT DL GLD GLD
BRCT

ROSEFIELD



Dial Size
19.5x24mm

OWSMS-O74

\$189.95

**OCTAGON XS WHT DL SLV
MESH**



Dial Size
19.5x24mm

OWGMG-O73

\$189.95

**OCTAGON XS WHT DL GLD
MESH**



Dial Size
19.5x24mm

OGGSS-O72

\$199.95

OCTAGON XS GRN DL SLV BRCT



Dial Size
19.5x24mm

OGGSG-O71

\$199.95

**OCTAGON XS GRN DL GLD
BRCT**

ROSEFIELD



Dial Size
21.5x
27.5mm

GWSSS-G03

\$229.95

THE GEMME WHT DL GLD SLV
BRCT



Dial Size
21.5x
27.5mm

GWGSG-G02

\$229.95

THE GEMME WHT DL GLD BRCT



Dial Size
26mm

SMGMG-S06

\$169.95

THE SMALL EDIT WHT MOP DL
GLD GLD MESH



Dial Size
36mm

RBGMG-R07

\$169.95

PEARL EDIT BLK MOP DL GLD
GLD MESH

ROSEFIELD



Dial Size
33mm

WBFLG-W95

\$169.95

W VILLAGE BLK MOP DL GLD
GRN SUED



Dial Size
19.5x24mm

OWGSS-O63

\$199.95

Octagon XS WHT DL SLV SLV
BRCT



Dial Size
19.5x24mm

OWDSG-O62

\$199.95

Octagon XS WHT DL SLV GLD
BRCT



Dial Size
19.5x24mm

OBGSG-O61

\$199.95

Octagon XS BLK DL GLD GLD
BRCT

ROSEFIELD



Dial Size
19.5x24mm

OWGSG-O60

\$199.95

**OCTAGON XS WHT DL GLD GLD
BRCT**



Dial Size
33mm

UWGSG-U31

\$189.95

**UPPER EAST SIDE STONES WHT
DL GLD GLD BRCT**



Dial Size
24x29mm

OWGMG-OV10

\$179.95

**THE OVAL WHT MOP DL GLD
GLD MESH**



Dial Size
24x29mm

OWGSG-OV01

\$189.95

**THE OVAL WHT MOP DL GLD
GLD BRCT**

ROSEFIELD



Dial Size
23x29mm

OBSBG-O49

\$189.95

**THE OCTAGON BLK DL GLD
BLK LTHR**



Dial Size
23x29mm

OWSSSG-O48

\$199.95

**THE OCTAGON WHT DL GLD
G2T BRCT**



Dial Size
23x29mm

OBSSG-O47

\$199.95

**THE OCTAGON BLK DL GLD
GLD BRCT**



Dial Size
22x24mm

QMWMG-Q039

\$179.95

**MINI BOXY WHT DL GLD GLD
MESH**

ROSEFIELD



Dial Size
33mm

WFGG-W85

\$169.95

W VILLAGE 33 MOP DL GLD
LGN LTHR



Dial Size
23x29mm

OCWSS-O41

\$199.95

THE OCTAGON WHT DL SLV SLV
BRCT



Dial Size
23x29mm

OCWSG-O40

\$199.95

THE OCTAGON WHT DL GLD
GLD BRCT



Dial Size
22x24mm

QMWSSG-Q023

\$189.95

MINI BOXY WHT DL GLD G2T
BRCT

ROSEFIELD



Dial Size
22x24 mm

QMWSG-Q021

\$189.95

**MINI BOXY WHT DL GLD GLD
BRCT**



Dial Size
26mm

26WR-265

\$169.95

**SMALL EDIT WHT DL RSG RSG
MESH**



Dial Size
26x28mm

QWSG-Q03

\$179.95

**THE BOXY WHT DL GLD GLD
MESH**



Dial Size
26mm

26WS-266

\$169.95

**SMALL EDIT WHT DL SLV SLV
MESH**

ROSEFIELD



WSPR-W73

\$169.95

**W VILLAGE LPK DL RSG LPK
SUED**



WEGR-W75

\$169.95

**W VILLAGE MOP DL RSG GRY
SUED**

Customer Service Enquiries

'Designa Accessories' has its own in-house customer service centre to help you and your customers with all enquiries relating to the service and repair of all 'DA' products.

Monday-Friday from 9.00am - 4.00pm

AUS OFFICE: T +61 2 8543 4600

E customer.service@designa.com.au
or srepairs@designa.com.au

NZ OFFICE: T +64 9 480 2211

E customer.service@designaaccessories.co.nz

Spare part orders can be placed via email (see listed on left).

All links orders incur a charge of \$10 per link.
Please contact us for further information on the price and availability of links.

Any expenses incurred in sending the watch to Designa Accessories are at owner's expense.

Limited Two Year Warranty

This warranty applies to your ROSEFIELD watch and is given by DA Designa Accessories Pty Ltd ABN 53 003 084 893 ("Designa") and, subject to certain exceptions (set out below) applies from the date the watch is purchased from Designa or a person accredited by Designa (the "Purchase Date").

The following applies to Australian purchasers only: Under the Australian Consumer Law, we advise our goods come with guarantees that cannot be excluded under the Australian Consumer Law. You are entitled to a replacement or refund for a major failure and for compensation for any other reasonably foreseeable loss or damage.

You are also entitled to have the goods repaired or replaced if the goods fail to be of acceptable quality and the failure does not amount to a major failure (the "Mandatory Provision").

This warranty is issued by DA Designa Accessories Pty Limited ABN 53 003 084 893 of PO Box 2576, Taren Point NSW 2229, telephone +61 2 8543 4600. You must bear the expense of making a claim under any such warranty. Any warranty given by Designa is in addition to other rights and remedies which you have as a consumer under law in relation to the goods or services to which the warranty relates.

The following parts ARE covered by the ROSEFIELD 2 year limited warranty:

1. Movement - 2 Years.
2. Batteries - 1 Year.

In the event of a defect or malfunction, your ROSEFIELD watch will be repaired or replaced with the same or similar model at our discretion. Your replacement watch will be warranted for the remainder of the period applicable to the original date of purchase.

The following parts ARE NOT covered under the ROSEFIELD 2 year limited warranty:

1. Band/strap, case, clasp, hands, dial, crown and stones (including damage, scratching or breakage).
2. Lens breakage, scratching or damage.
3. Water leakage if the crown is not activated or the water care guidelines have not been followed.
4. General wear and tear, finish or plating of the watch or any defects arising from misuse or any other use which is not in accordance with the Recommended Watch Care and Precautions.
In addition the warranty does not cover issues from any alteration, service or repair performed by any other party other than the Designa Accessories authorized service centre.

WATCH REPAIR:

Return the watch carefully packed (do not send in original packaging as it will not be returned) and registered to:

DESIGNA ACCESSORIES
PO BOX 2576, TAREN POINT NSW 2229 AUSTRALIA

DESIGNA ACCESSORIES NZ
PO BOX 99313, NEWMARKET AUCKLAND 1149 NEW ZEALAND


OR HEAD TO OUR WEBSITE: designaaccessories.com.au
TO DOWNLOAD OUR REPAIR FORM

WATER RESISTANCY USAGE GUIDE

INDICATION		WATER-RELATED USE				
DIAL MARKING	DESCRIPTION	SPLASH OR RAIN ETC	SWIMMING OR CAR WASH	DIVING OR SNORKELING	SCUBA DIVING	SHOWER OR SAUNA
-	DUST RESISTANT*	NO	NO	NO	NO	NO
3ATM or 30m or BAR	WATER RESISTANT**	YES	NO	NO	NO	NO
5ATM or 50m or BAR	50m WATER RESISTANT**	YES	YES	NO	NO	NO
10ATM or 100m or BAR	100m WATER RESISTANT**	YES	YES	YES	NO	NO
20ATM or 2000m or BAR	200m WATER RESISTANT**	YES	YES	YES	YES	NO

* No caseback marking indicates watch is dust resistant only & the wearer must not get watch wet.

** Water resistant casing does not permit pusher or button operation while in water.



WARNING

- Contains button or coin cell battery
- Hazardous if swallowed or placed inside any part of the body
- This product should only be serviced by an authorised technician

WARNING - KEEP BUTTON BATTERIES OUT OF REACH OF CHILDREN

- Swallowing may lead to serious or fatal injury in as little as 2 hours due to chemical burns and the perforation of the oesophagus or digestive system.
- Never allow children to replace batteries on any device.
- If you suspect your child has swallowed or inserted a button battery, immediately call the 24-hour Poisons Information Centre on 13 11 26 (Australia) or 0800 764 766 (New Zealand) for fast expert advice.
- Regularly examine devices and make sure the battery compartment is correctly secured.
- Dispose of used button batteries immediately and safely out of the reach of children.
- A battery can still be dangerous even when it can no longer operate the device.
- Tell others about the risk associated with the button batteries and how to keep their children safe.

ACCESSORIES ————— EST. 1986

Telephone +61 2 8543 4600
designaaccessories.com.au

ABN: 53 003 084 893

[illegible]

D E S I G N A

ACCESSORIES ————— EST. 1986

Telephone **+61 2 8543 4600**
Email **sales.orders@designa.com.au**
designaaccessories.com.au